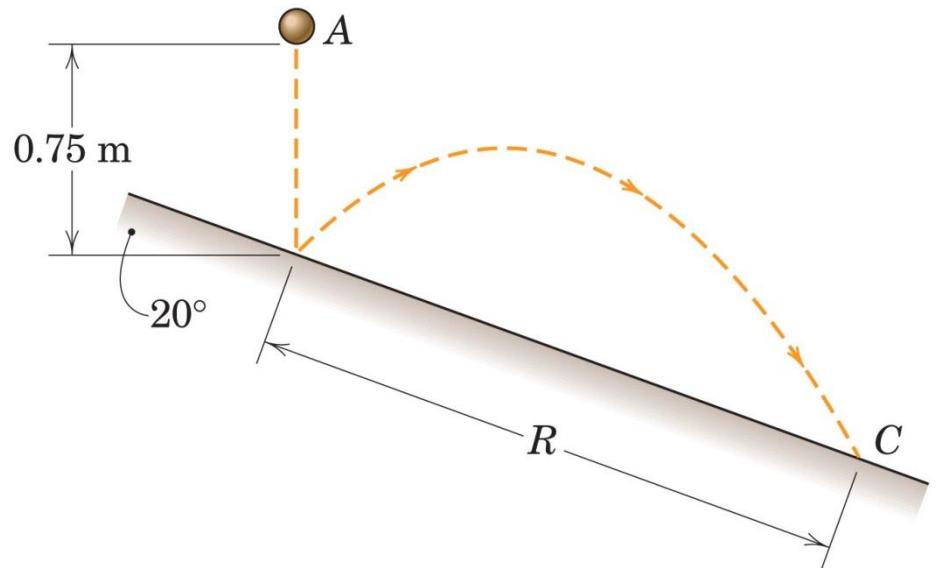


PROBLEM 3/255

The ball is released from position A and drops 0.75 m to the incline. If the coefficient of restitution in the impact is $e = 0.85$, determine the slant range R .



PROBLEM 3/258

The two cars collide at right angles in the intersection of two icy roads. Car *A* has a mass of 1200 kg and car *B* has a mass of 1600 kg. The cars become entangled and move off together with a common velocity v' in the direction indicated. If car *A* was traveling 50 km/h at the instant of impact, compute the corresponding velocity of car *B* just before impact.

